

RESOURCES FOR PATIENTS AND FAMILIES

HOME CARE RESOURCES

This is a useful collection of links to home care resources

GENERAL RESOURCES



Palliative care YouTube channel by an Australian aged care and Hospice facility, with many practical instruction videos



Carers NZ website, with a broad range of information in both written and video formats specific to New Zealand

SYRINGE DRIVER AND SUBCUTS



Setting up a syringe driver



Connecting a loaded syringe driver



Inserting a subcutaneous line

RESOURCES FOR PATIENTS AND FAMILIES

HOME CARE RESOURCES

FENTANYL PATCHES

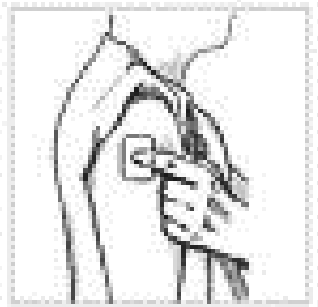
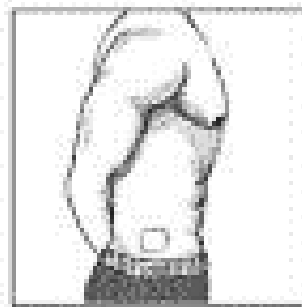
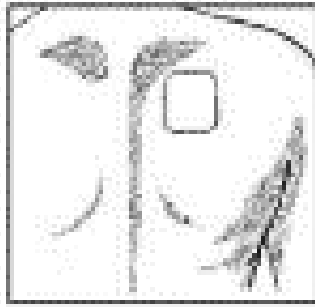
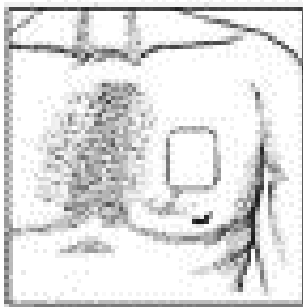


Watch:

Clear instructions on how to apply, remove and dispose of Fentanyl patches.

How to Apply Your Fentanyl Patch

1. Remove the old patch(es) first
2. Write the day of application on the outside of the new patch(es)
3. Peel the plastic backing off and apply the new patch(es) to dry, clean, non-irritated area of flat skin where there is not too much hair. Common sites include:



How to Dispose of Fentanyl Patch

Some Fentanyl may be on the patch so make sure to keep this out of reach of children.

Carefully remove the patch and fold the sticky side of the patch together. Wrap the patch and place into rubbish bin.

If you have questions about using a Fentanyl patch, please contact your prescriber or Hospice West Auckland on 0800 834 9755.

RESOURCES FOR PATIENTS AND FAMILIES

HOME CARE RESOURCES

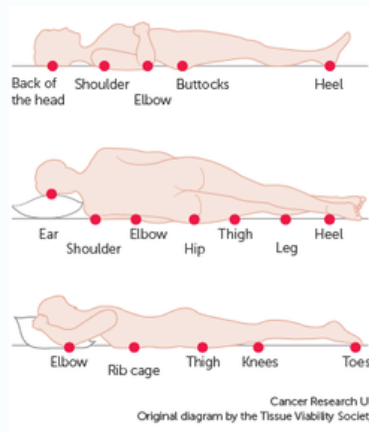
MOVING AND HANDLING



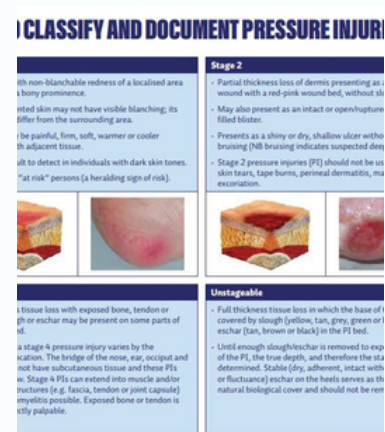
Using slide sheets in bed



Carers manual handling guide



Pressure area basic information



In-depth pressure area information, including multilingual pamphlets

MEDICATION



DEATH AND DYING



CONTINENCE VIDEO SERIES

